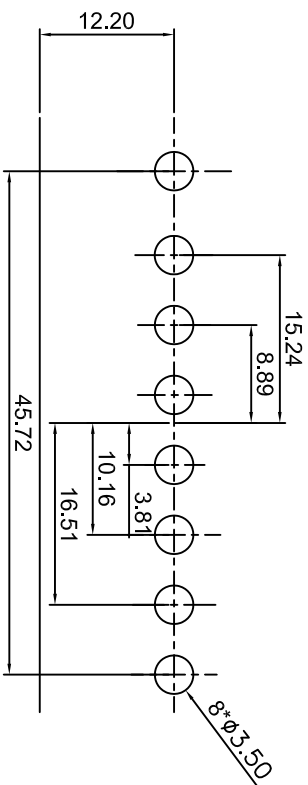
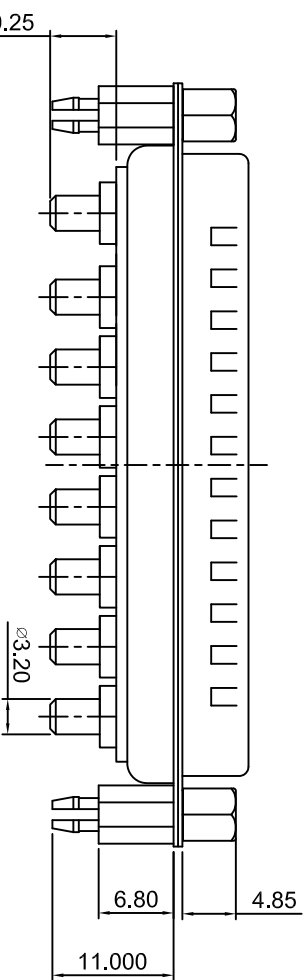
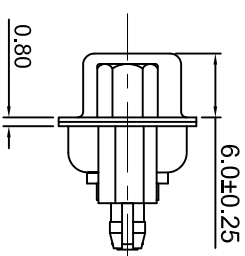
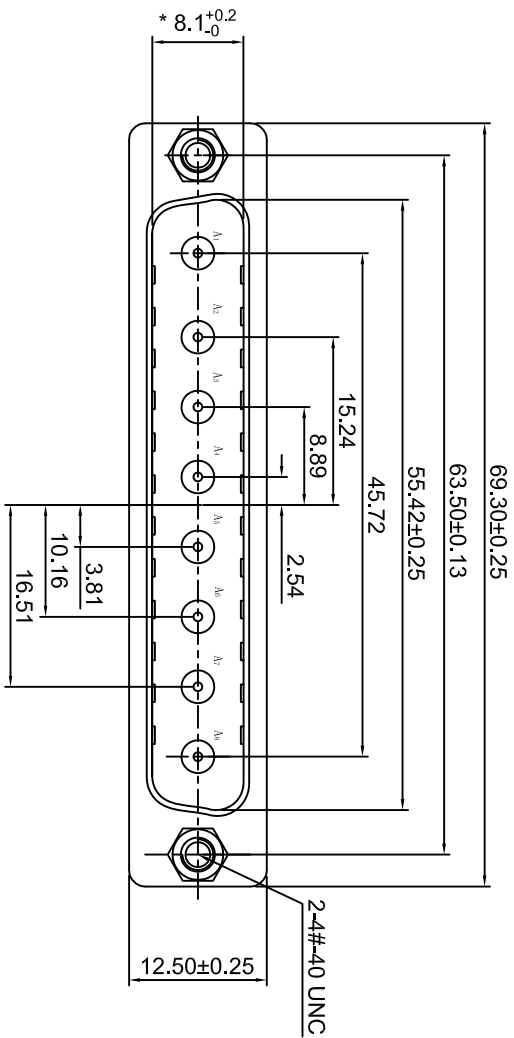


ROHS2.0

| REV. | ECH NO. | LOCATIONS | DESCRIPTION | DATE | DESIGN |
|------|---------|-----------|-----------------------|------------|--------|
| A0 | | | 原始版本(INITIAL EDITION) | 2020.12.16 | m t |



PCB LAYOUT

MATERIALS AND FINISH
 SHELL : STEEL MATERIAL, TIN FINISHED
 DIMPLES ON PLUG ONLY
 CONNECTOR INSULATOR : PBT THERMOPLASTIC,
 30% GLASS FILLED, UL 94V-0 RATED, BLACK COLOR
 HIGH POWER CONTACT MATERIAL: BRASS, 3U" GOLD PLATED

ELECTRICAL CHARACTERISTICS
 HIGH POWER CONTACT CURRENT RATING : 30 AMPS
 HIGH POWER CONTACT RESISTANCE : 2.7 MILLIOHMS MAX.
 DIELECTRIC WITHSTANDING VOLTAGE : 1000 V AC FOR 1 MINUTE
 INSULATION RESISTANCE : 5000 MEGAOHMS MIN.
 TEMPERATURE RATING : -55° C ~ +125° C

| | | | |
|---|----------|--|-------------|
| | | 东莞市跃展精密连接器有限公司 Dongguan Yuezhan Precision Connectors Co., Ltd Tel: +86-769-8318391/2 Fax: +86-769-8318391 Web: www.dgzyec.com | |
| DESIGN: | 卓涛 | CHECKED: | 卓涛 |
| APPROVED: | 卓涛 | PART NO.: | 01.11908101 |
| SCALE: 1:1 | SIZE: A4 | DRAW NO.: | 01 OF 01 |
| TOLERANCE: X.X ±0.35 X.XX ±0.25 X.XXX ±0.15 Angle ±3.0° | | PART NAME: 大电流SWSM 插板铆铆30A | |